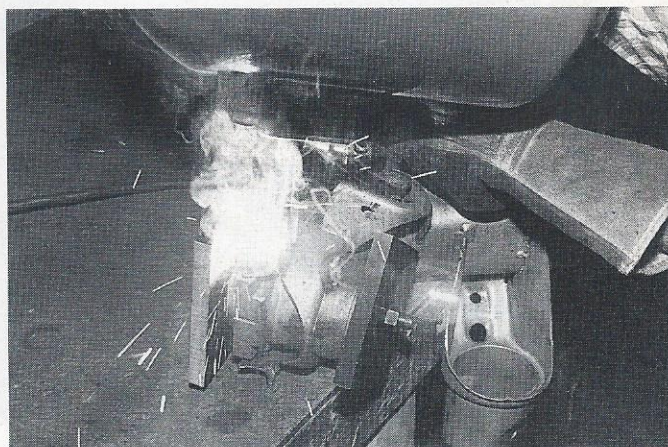
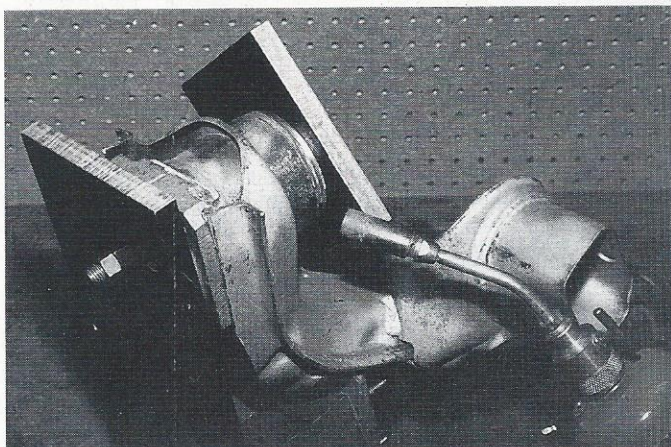
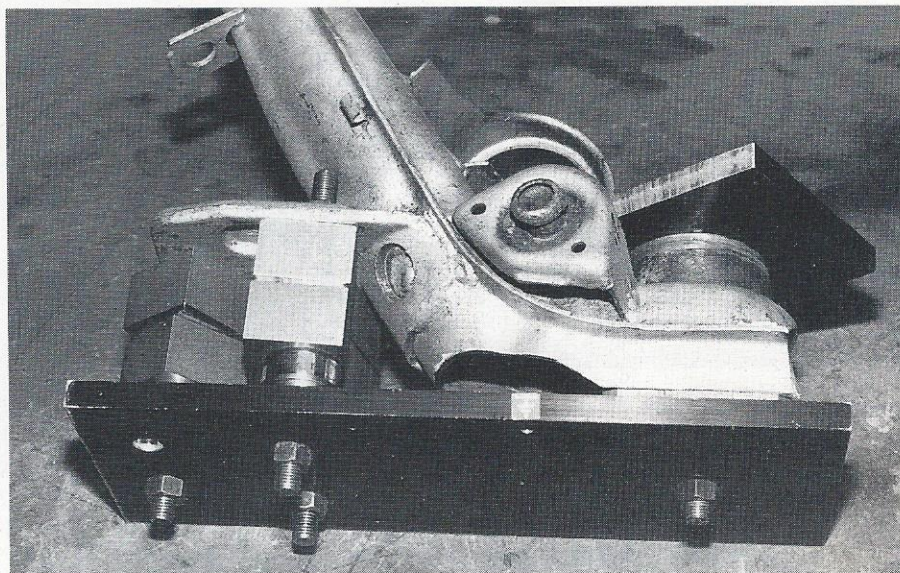


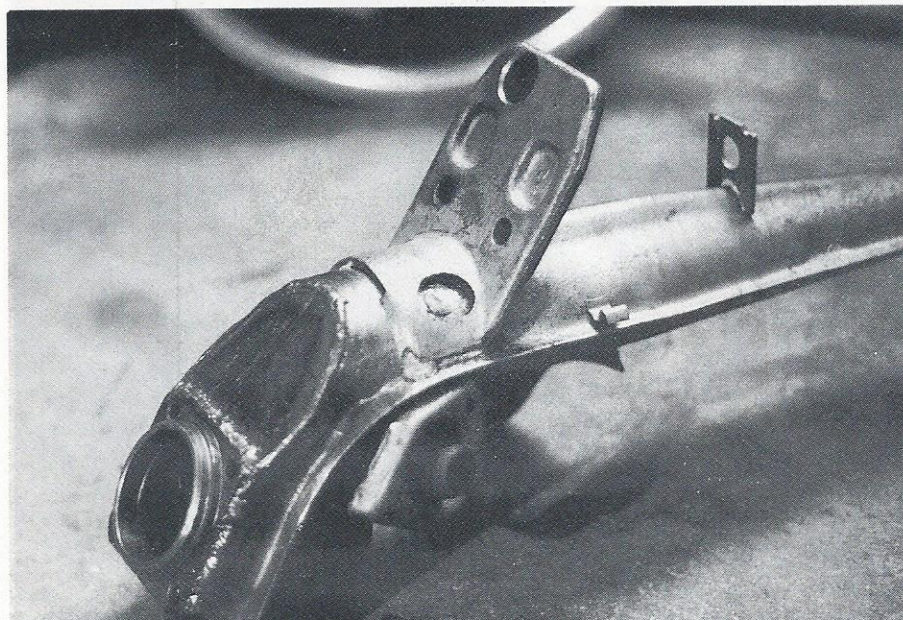
RS Sedan Arms

26mm shorter than Type 1 IRS axles. The completed job narrows the rear track by 26mm, about 1-inch per side. Sure, it isn't a bunch, but it will allow you to use a 8x15-inch Porsche alloy wheel mounted on a 225/50/15-inch radial tires using the stock drum brakes. With 914 rear disc brakes, you can use a 7x15-inch wheel on the same 225/50/15-inch tire. Sound interesting? Let's take a closer look.

RIGHT, the bearing housing is replaced back into the trailing arm. It is moved 26mm in (towards the center of the car). Before it is rewelded back into position, a metal fixture should be used as shown. This insures that the proper camber and toe-in are maintained.



ABOVE LEFT, you should preheat both the trailing arm and the bearing housing before welding. **ABOVE**, weld the bearing housing to the trailing arm using a wire-feed MIG welder. Due to the critical nature of this operation, a professional welder should perform the welding chores.



LEFT, cut out a "D" shaped piece of 3mm thick steel and weld it to the trailing arm between the bearing housing and the