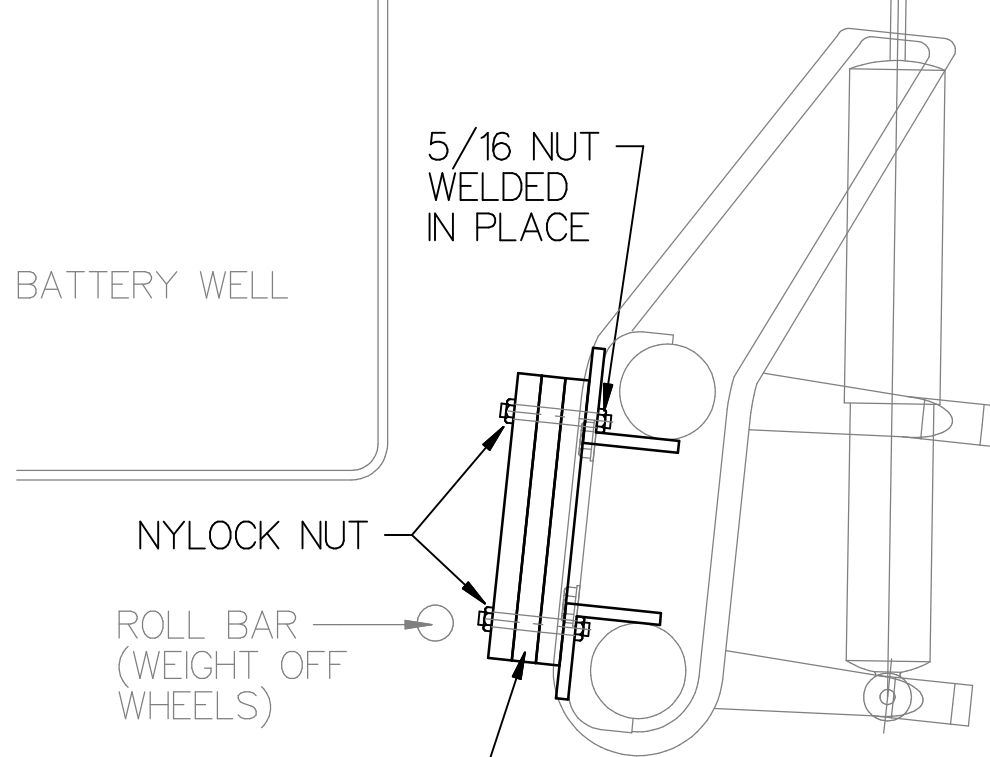
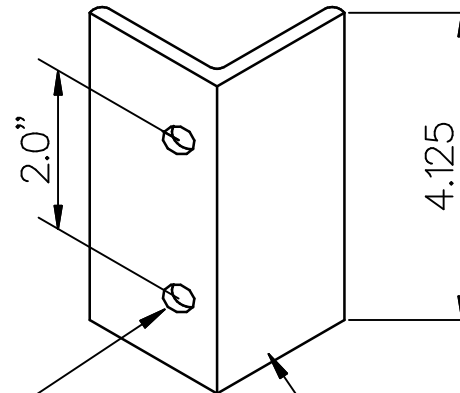


ADDING WEIGHTS TO FRONT BEAM
APPROX. 26 LBS

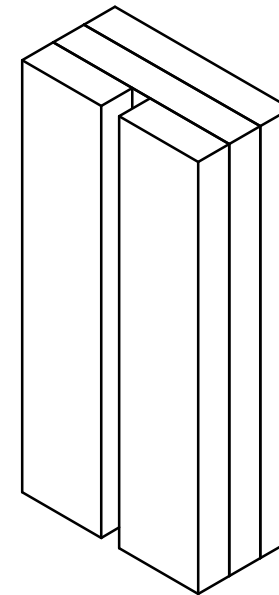
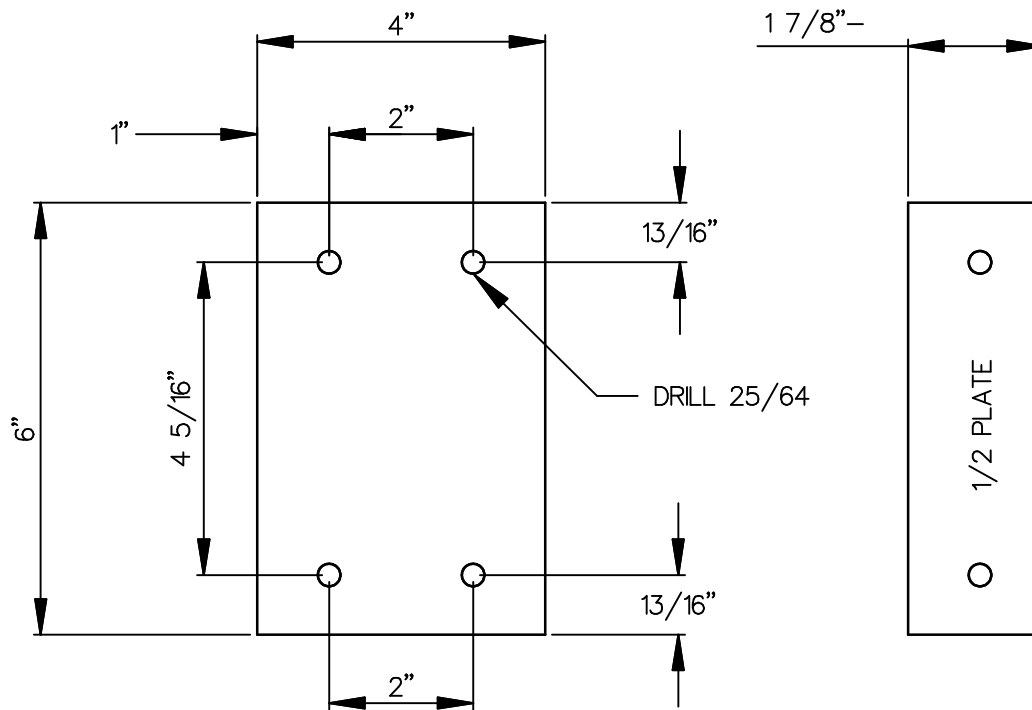


ASSEMBLY WT.
PER SIDE 12.75



5/16" X 18 TAPPED
5/16 X 18 NUT WELDED
TO BACK OF ANGLE.
CUT THE FILLET WHERE
NUTS WILL GO SO THAT
THEY WILL FIT FLUSH
WITH THE INSIDE OF
THE ANGLE

2 x 2 x 1/4 ANGLE



WEIGHTS
4 - REQUIRED
TOTAL WT. 3.4 LBS/EA

I STARTED WITH 6 X 6 X 1/2" BLANKS.
THE 1/2 WEIGHT IS WHAT'S LEFT AFTER
THE 4.125" IS CUT. THERE WILL BE 4.